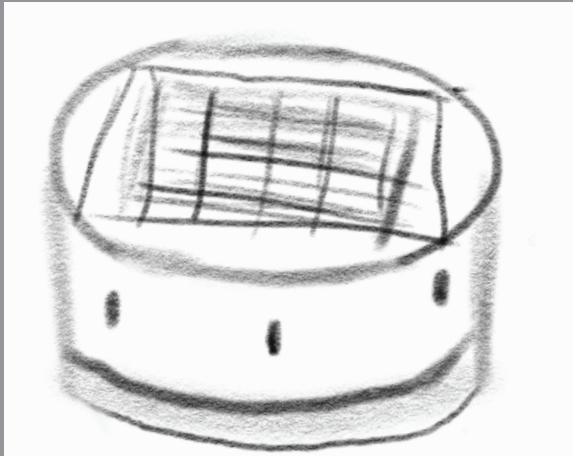


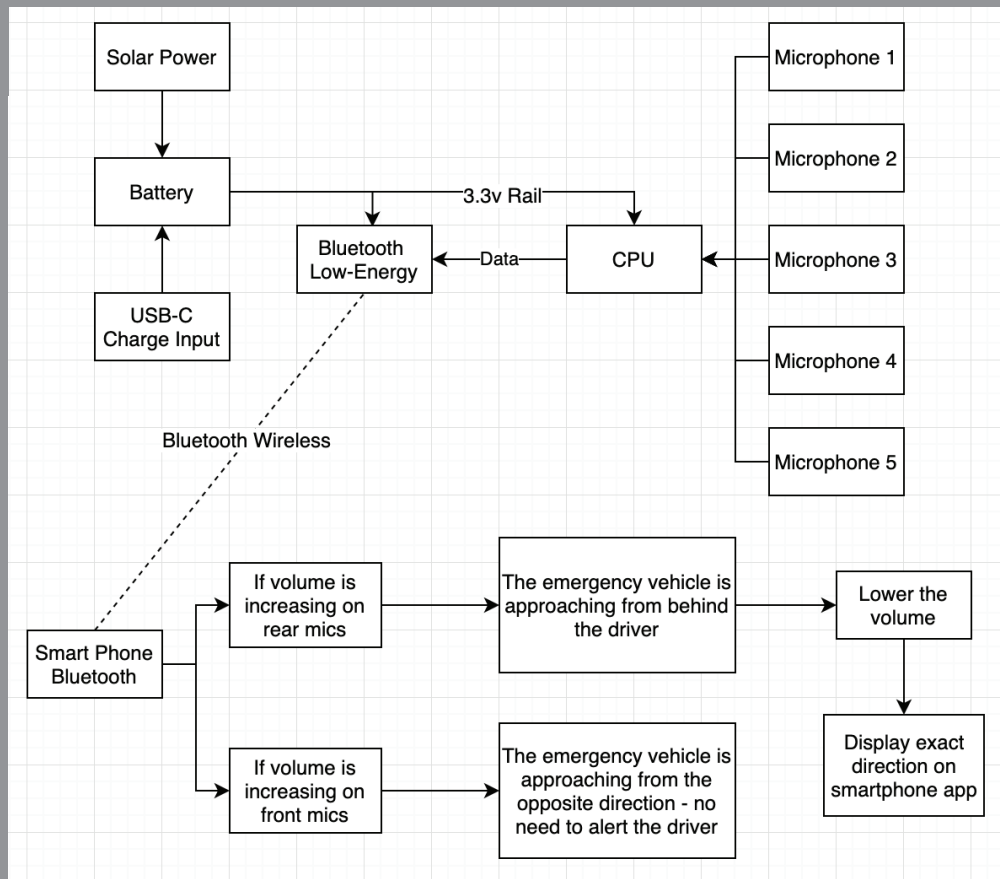
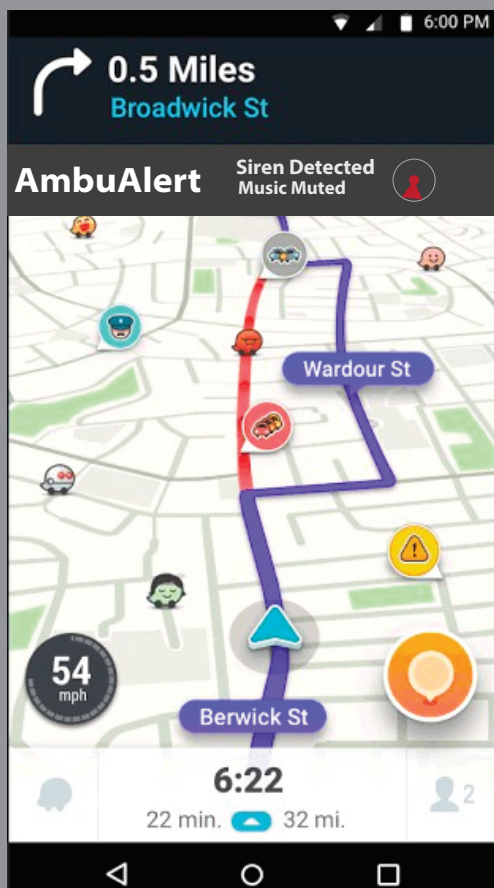
# AmbuAlert

Automatically alerts drivers to the presence of emergency vehicles and lowers the car volume



Bluetooth connected microphone assembly adheres to the outside of the car. A solar panel recharges the internal battery, which can be optionally charged by USB. The top portion of the unit screws off the bottom base which is stuck to the top of the vehicle.

Much like Spotify, Ambu-Alert integrates in a convenient way with other apps to help relay info to the driver



Five microphones detect the intensity and direction of sounds - distinguishing between emergency vehicles behind the driver and in opposite direction on the other side of the road. The driver will only be alerted to vehicles behind them.

# AmbuAlert

## User Manual

1. Unbox the device and adhere the base to the top center of your car as best as possible. Make sure to align the arrow to the front of your car.

2. The device will automatically detect that it has been removed from the box and start looking for your phone via bluetooth. Download the app and follow the instructions to connect the device.

3. Once the device is connected, open the app and the app will guide you through the steps to integrate the app with other navigation apps such as Waze, Apple Maps, or Google Maps.

4. Your music will now be lowered to 80% of its original volume if a siren is detected behind you. The direction of the siren will also be displayed.

After all the setup is complete, you should not need to do anything else. You may get a low-battery warning if you live in areas with little to now sunlight. Screw off the top part of the device and plug it into any USB-C plug if the battery gets low.

