

jamLink Quick Start Guide



MUSICIANLINK.COM

1

Power up your jamLink and attach it to an open port on your wired or wireless router. The jamLink is fully booted up online when the RUN LIGHT glows solid orange. (boot up should take about 1 minute)

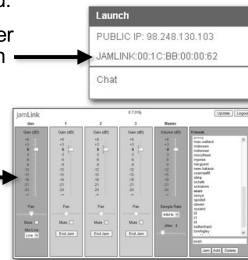


3

Go to www.musicianlink.com and enter your username and password.

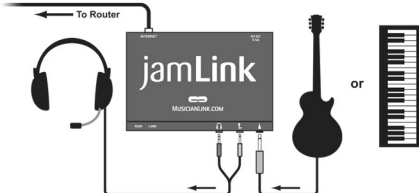
Your jamLink's ID number will appear in the Launch Window.

Click on the jamLink ID number to bring up the jamLink Web Interface.



2

Using a 1/4" audio cable, attach a sound source to the audio input of the jamLink (guitar, keyboard etc.). Attach a "Gamer/Skype" style headset to the 1/8" mic and headphone jacks of the jamLink.



4

Your friends will appear in the Friends List on the right hand side of the interface. If any of your friends are currently online, their names will appear in **BOLD** type.

Double click on your friend's name to connect to their jamLink and start jamming!

