



# Visualizing Harmony

Craig Stuart Sapp

ICMC 2001

Havana, Cuba



# Krumhansl-Schmuckler Algorithm

- Statistical measurement of the key
- Add durations of each pitch class
- Compare duration pattern to key prototype
- Choose best match as the key

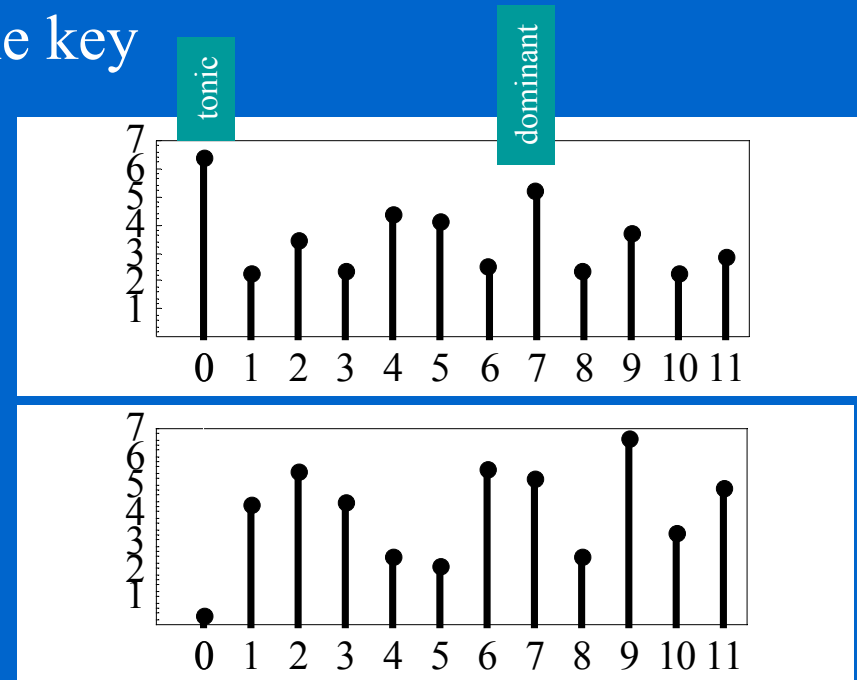
# Krumhansl-Schmuckler Algorithm

- Statistical measurement of the key
- Add durations of each pitch class
- Compare duration pattern to key prototype
- Choose best match as the key

Example:

Typical major  
key distribution  
of notes:

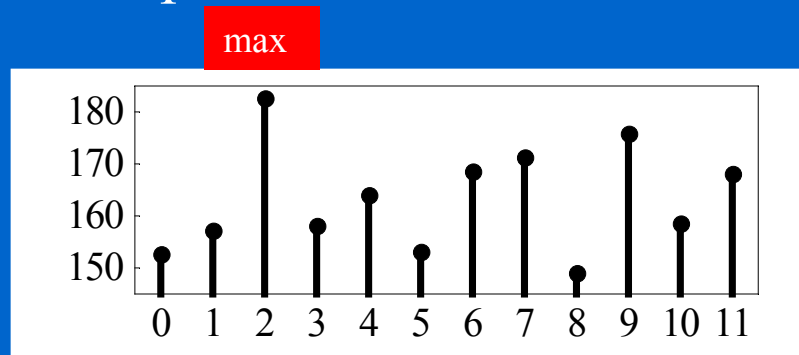
Example data  
measured from  
music:



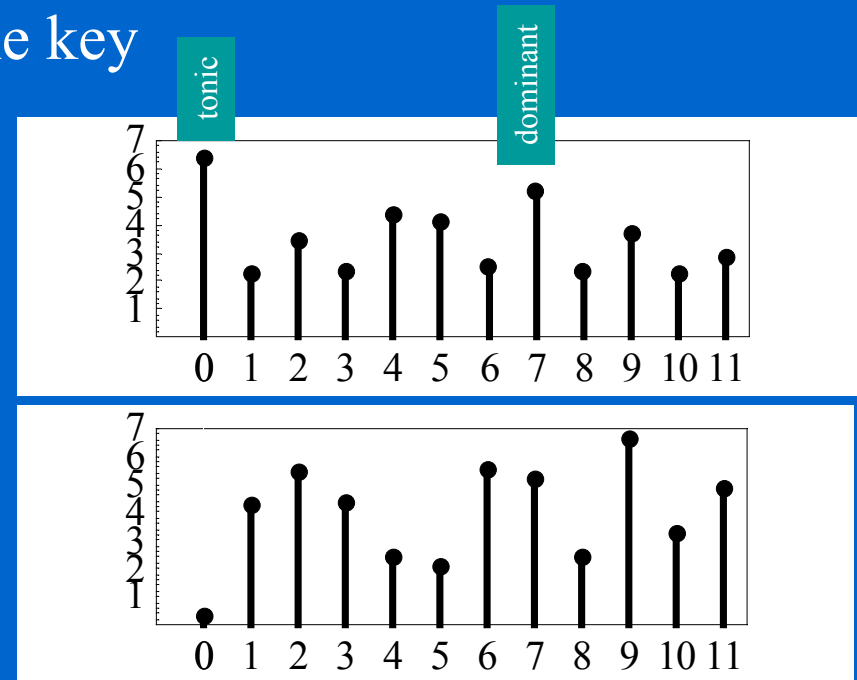
# Krumhansl-Schmuckler Algorithm

- Statistical measurement of the key
- Add durations of each pitch class
- Compare duration pattern to key prototype
- Choose best match as the key

Example:

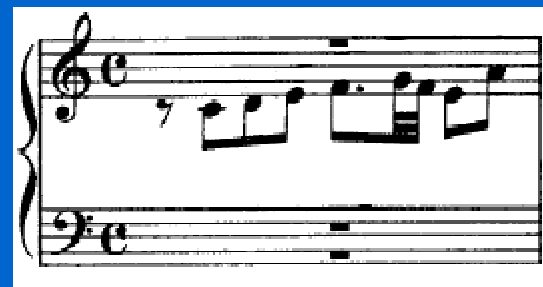


D Major is best fit



# Well-Tempered Clavier

```
!!!COM: Bach, Johann Sebastian
!!!XEN: The Well-Tempered Clavier, Volume 1, Fugue 1.
!!!SCT: BWV 846b
**kern **kern **kern **kern
*clefF4 *clefF4 *clefG2 *clefG2
*M4/4 *M4/4 *M4/4 *M4/4
=1      =1      =1      =1
1r      1r      8r      1r
.        .        8c      .
.        .        8d      .
.        .        8e      .
.        .        8.f     .
.        .        32g     .
.        .        32f     .
.        .        8e      .
.        .        8a      .
=2      =2      =2      =2
```



Result of Humdrum **key** command:

Estimated key: C major (r=0.8640) confidence: 22.3%

# Well-Tempered Clavier (2)

Book 1:	Fugue 1:	C major	(r=0.8640)	confidence: 22.3%
	Fugue 2:	C minor	(r=0.8884)	confidence: 59.1%
	Fugue 3:	G# major	(r=0.8238)	confidence: 1.4%
	Fugue 4:	C# minor	(r=0.8681)	confidence: 58.2%
	Fugue 5:	D major	(r=0.9100)	confidence: 56.6%
	Fugue 6:	D minor	(r=0.7905)	confidence: 5.2%
	Fugue 7:	E-flat major	(r=0.8332)	confidence: 31.4%
	Fugue 8:	D# minor	(r=0.8428)	confidence: 70.9%
	Fugue 9:	E major	(r=0.8609)	confidence: 37.3%
	Fugue 10:	E minor	(r=0.7586)	confidence: 4.1%
	Fugue 11:	F major	(r=0.7568)	confidence: 17.7%
	Fugue 12:	F minor	(r=0.8022)	confidence: 25.2%
	Fugue 13:	F# major	(r=0.8748)	confidence: 39.9%
	Fugue 14:	F# minor	(r=0.8248)	confidence: 33.2%
	Fugue 15:	G major	(r=0.8575)	confidence: 17.8%
	Fugue 16:	G minor	(r=0.9208)	confidence: 82.4%
	Fugue 17:	A-flat major	(r=0.8441)	confidence: 25.6%
	Fugue 18:	G# minor	(r=0.8228)	confidence: 49.4%
	Fugue 19:	A major	(r=0.8351)	confidence: 21.8%
	Fugue 20:	A minor	(r=0.7772)	confidence: 13.3%
	Fugue 21:	B-flat major	(r=0.8539)	confidence: 37.6%
	Fugue 22:	B-flat minor	(r=0.8432)	confidence: 63.3%
	Fugue 23:	B major	(r=0.8589)	confidence: 19.3%
	Fugue 24:	B minor	(r=0.8266)	confidence: 40.8%

# Well-Tempered Clavier (3)

Book 2:	Fugue 1:	C major	(r=0.9382)	confidence: 59.2%
	Fugue 2:	C minor	(r=0.9380)	confidence: 70.1%
	Fugue 3:	C# major	(r=0.9524)	confidence: 78.0%
	Fugue 4:	C# minor	(r=0.7937)	confidence: 38.9%
	Fugue 5:	D major	(r=0.8226)	confidence: 15.1%
	Fugue 6:	D minor	(r=0.8729)	confidence: 56.5%
	Fugue 7:	E-flat major	(r=0.8961)	confidence: 15.8%
	Fugue 8:	D# minor	(r=0.7776)	confidence: 44.2%
	Fugue 9:	E major	(r=0.8248)	confidence: 8.8%
	Fugue 10:	E minor	(r=0.8239)	confidence: 45.4%
	Fugue 11:	F major	(r=0.9037)	confidence: 39.9%
	Fugue 12:	F minor	(r=0.7862)	confidence: 51.4%
	Fugue 13:	F# major	(r=0.7834)	confidence: 15.6%
	Fugue 14:	F# minor	(r=0.8283)	confidence: 52.1%
	Fugue 15:	D major	(r=0.8537)	confidence: 18.5%
	Fugue 16:	G minor	(r=0.7928)	confidence: 44.8%
	Fugue 17:	A-flat major	(r=0.8958)	confidence: 33.5%
	Fugue 18:	G# minor	(r=0.8473)	confidence: 62.1%
	Fugue 19:	E major	(r=0.7938)	confidence: 3.8%
	Fugue 20:	A minor	(r=0.8704)	confidence: 87.0%
	Fugue 21:	B-flat major	(r=0.8659)	confidence: 44.7%
	Fugue 22:	B-flat minor	(r=0.8329)	confidence: 57.5%
	Fugue 23:	B major	(r=0.8621)	confidence: 16.3%
	Fugue 24:	F# minor	(r=0.7644)	confidence: 0.8%



# Window Size

- Compositions are usually not all in one key



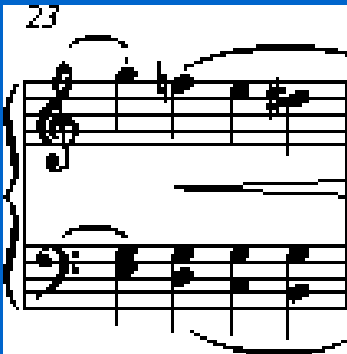
# Window Size

- Compositions are usually not all in one key
- How much music to consider when determining key?

# Window Size

- Compositions are usually not all in one key
- How much music to consider when determining key?
  - 1 measure is usually not enough

One measure:



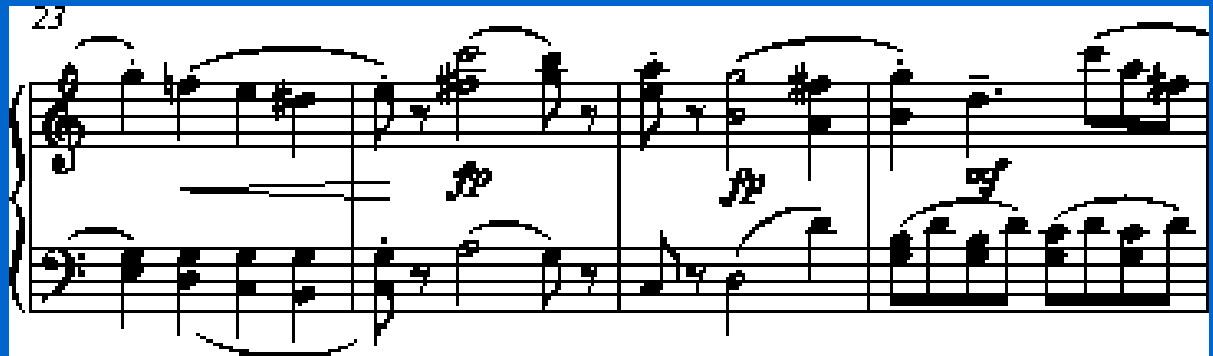
# Window Size

- Compositions are usually not all in one key
- How much music to consider when determining key?
  - 4 measures is often good
  - depends on meter, rhythm, etc.

One measure:



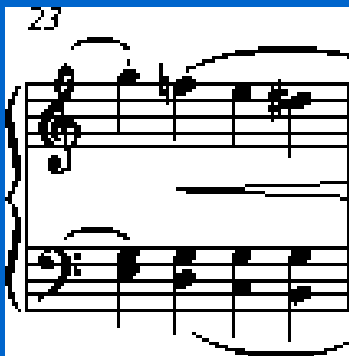
Four measures:



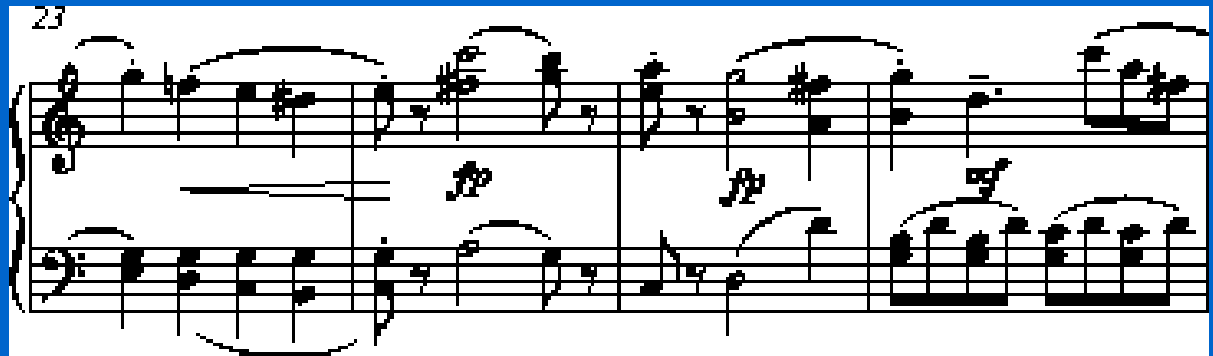
# Window Size

- Compositions are usually not all in one key
- How much music to consider when determining key?
  - 4 measures is often good
  - depends on meter, rhythm, etc.
- Safe way is to consider all window sizes for analysis

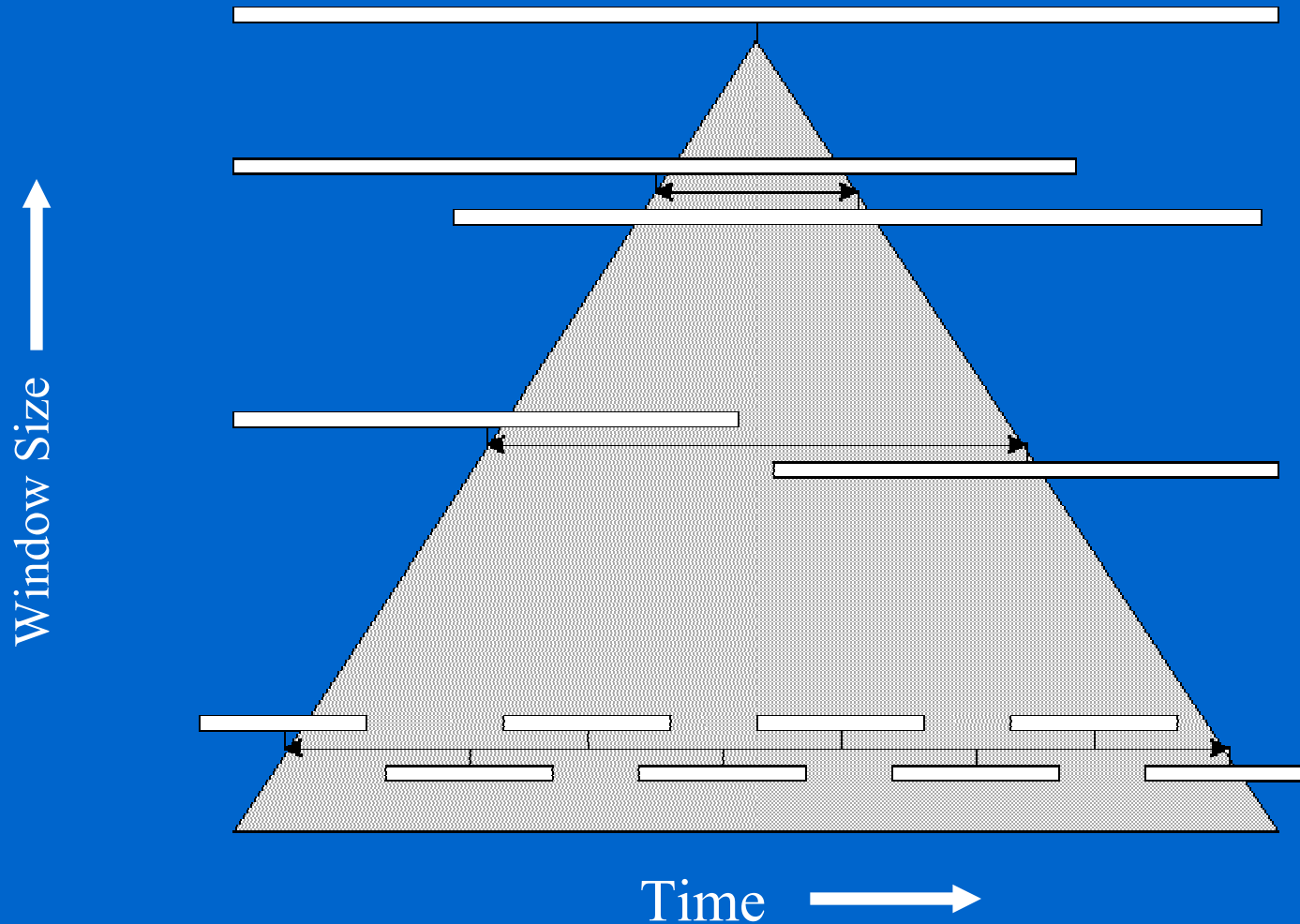
One measure:



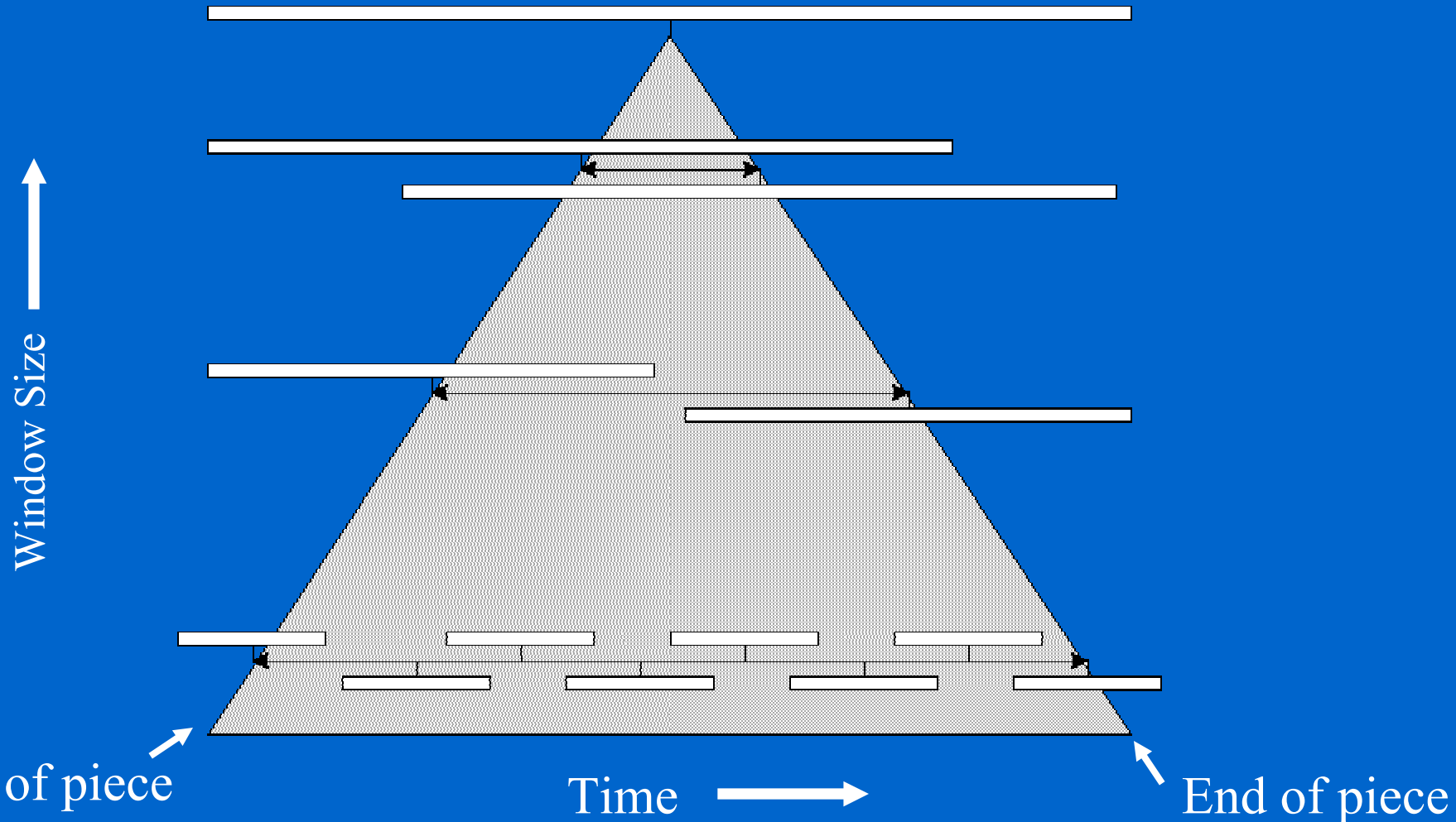
Four measures:



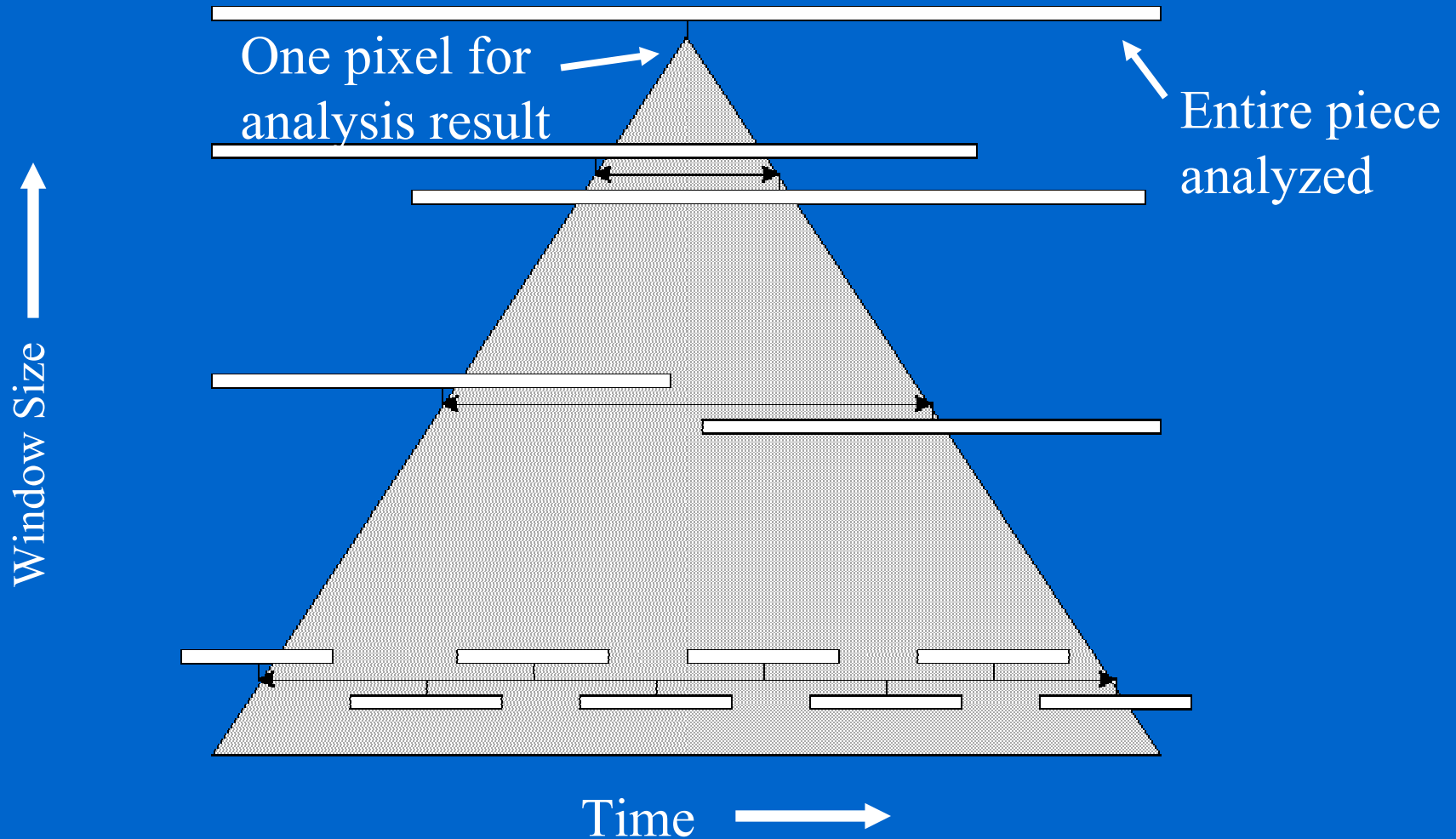
# 2D Plot for Key Analyses



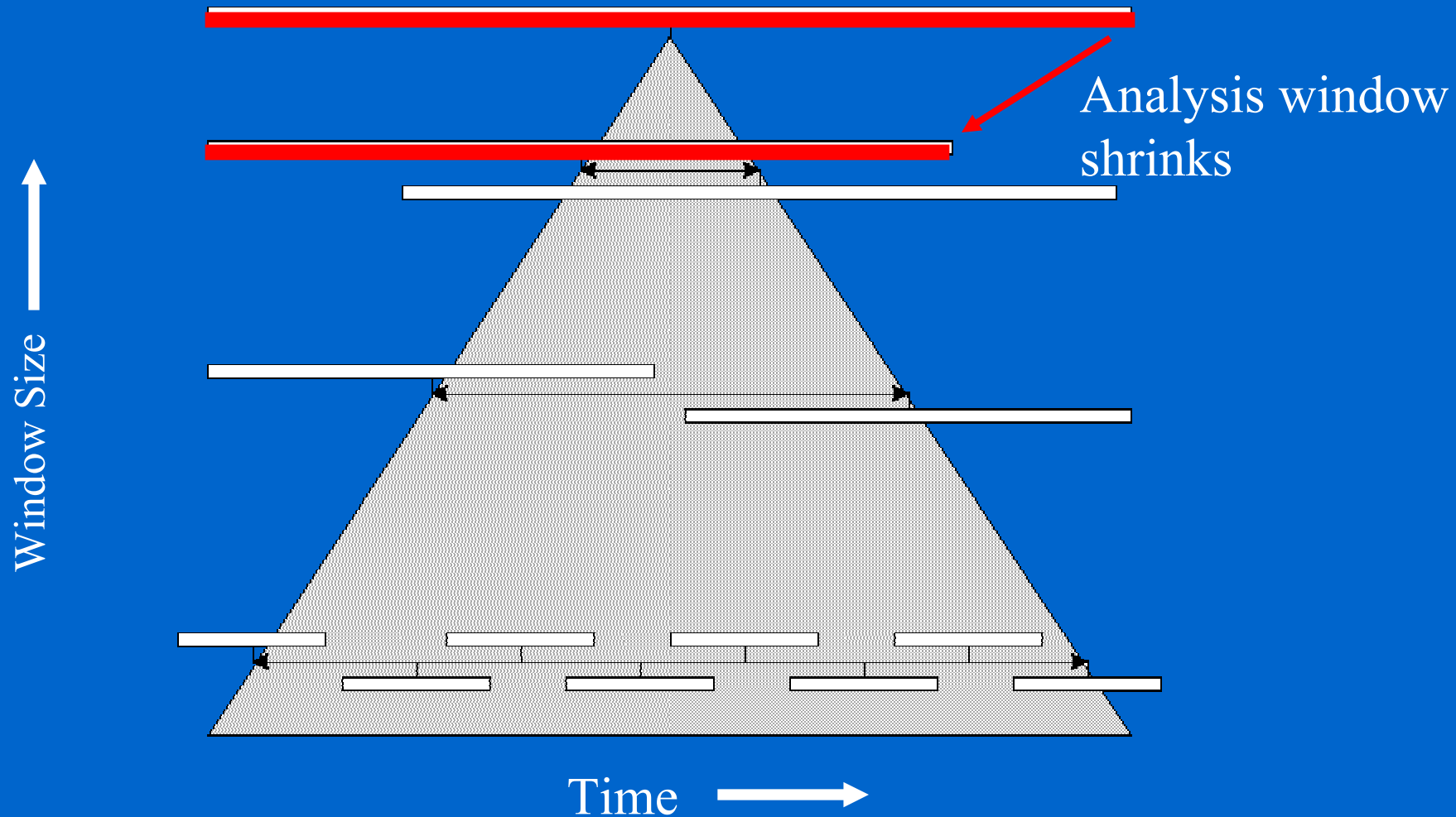
# 2D Plot for Key Analyses



# 2D Plot for Key Analyses

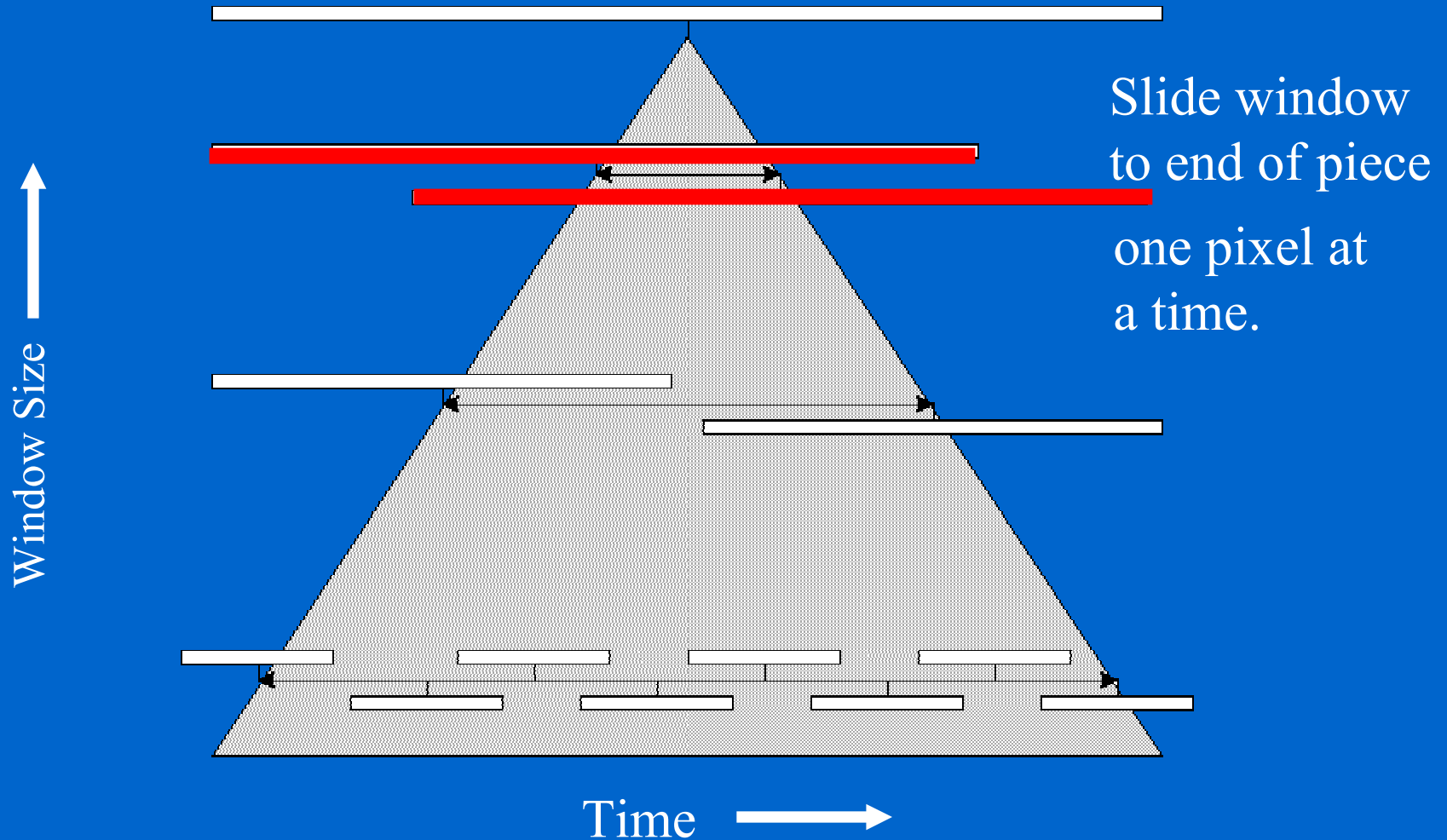


# 2D Plot for Key Analyses

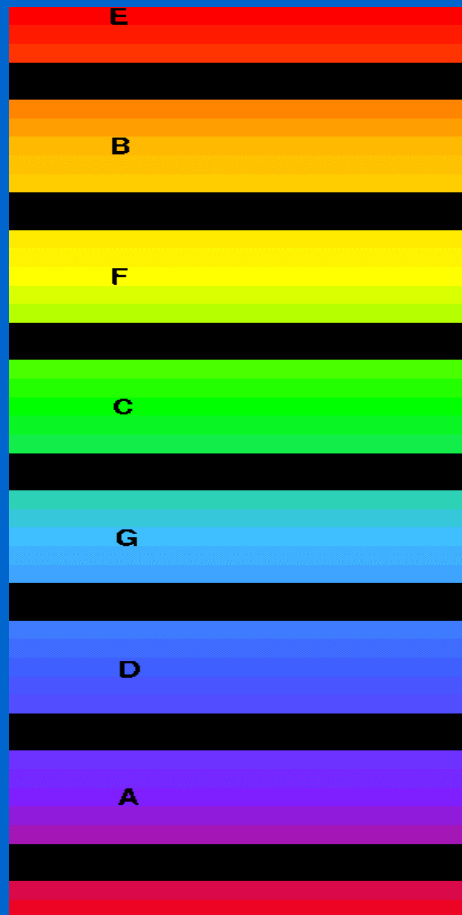




# 2D Plot for Key Analyses



# Key to Color Mapping



- Rainbow mapped to circle of fifths
- Mostly a diatonic mapping
- Sufficient for tonal harmony
- Any mapping is possible
- Brightness/Contrast can also be used

For example:

Major/Minor => Bright/Dark

# Example: Mozart Sonatina



VS1

## Sonatine I

Wolfgang Amadeus Mozart

Allegro brillante

C major

G major

D minor

F major

C major

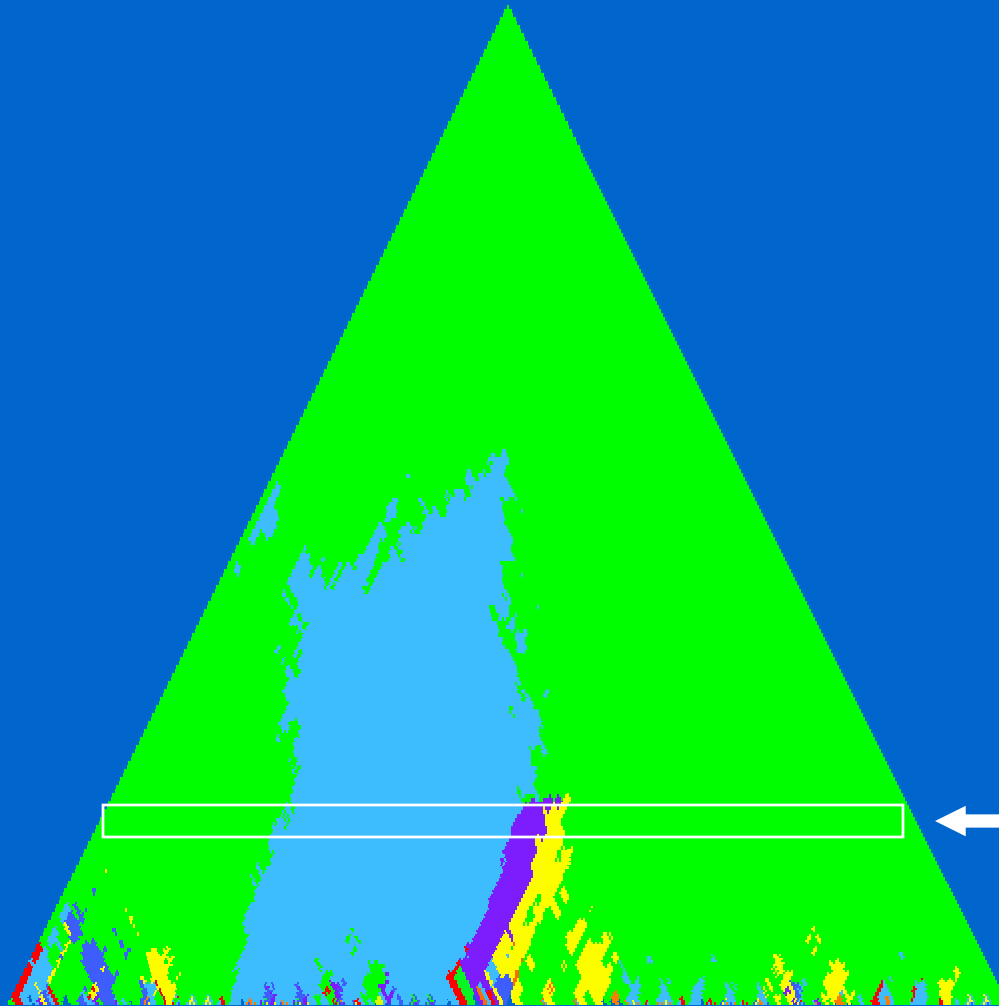
•  
•  
•

# Linear Picture of Key



- 
- 
- 

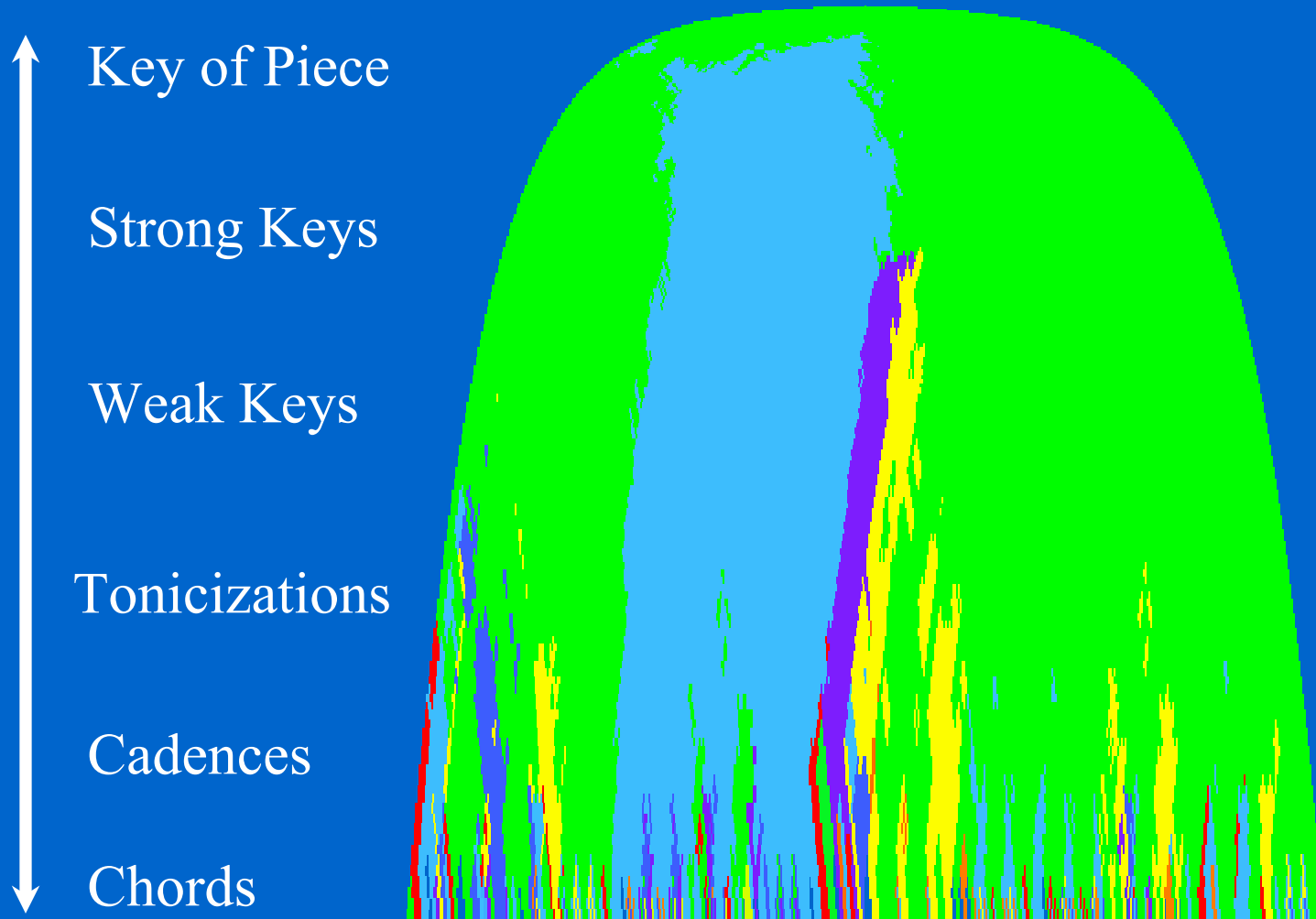
# 2D Picture of Key



Linear Key

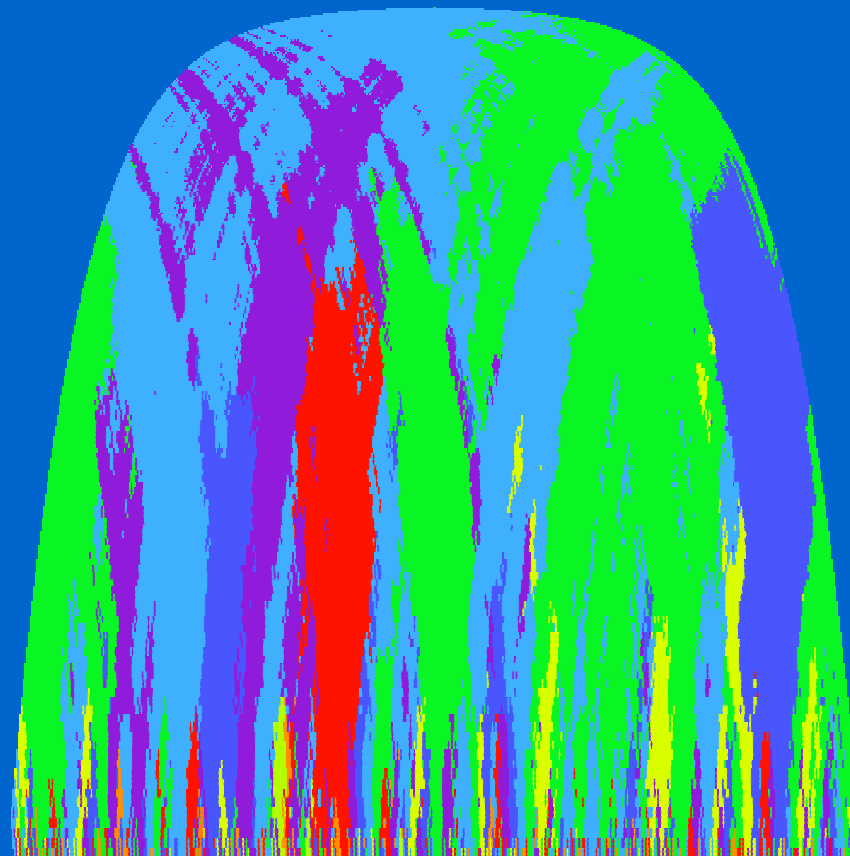
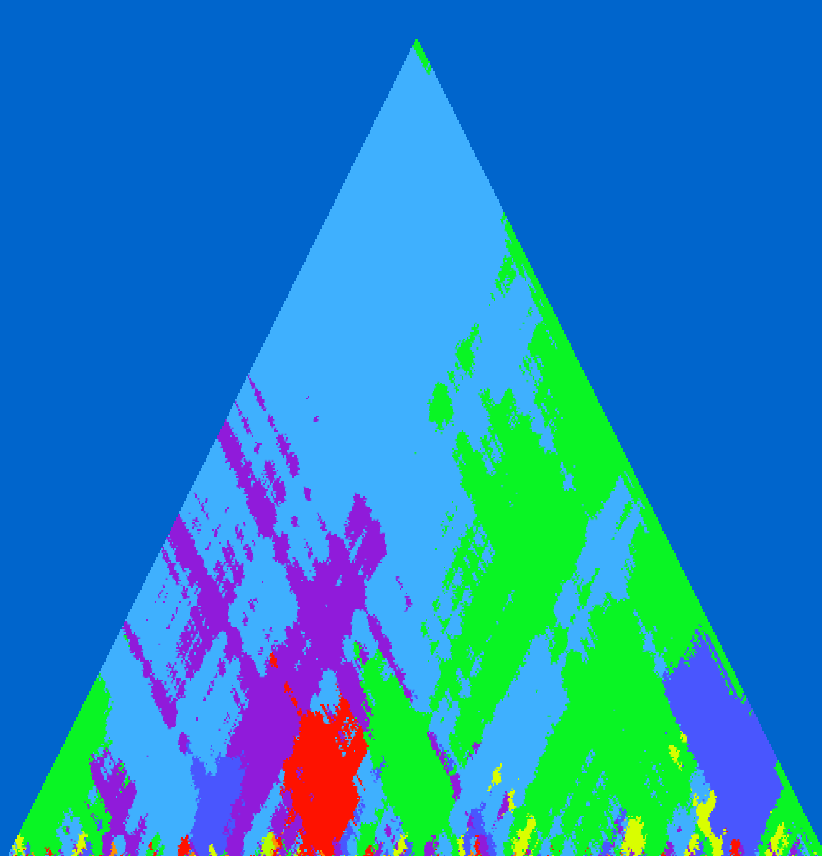
- 
- 
- 
- 
- 
- 
- 
- 
-

# Logarithmic Scaling

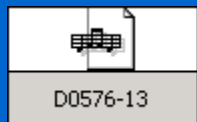
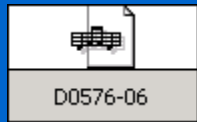


- 
- 
- 

# WTC1 Fugue 3

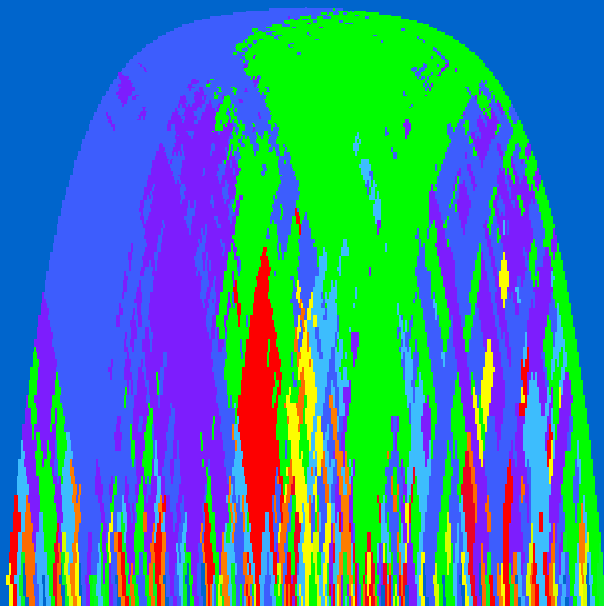


- 
- 
- 

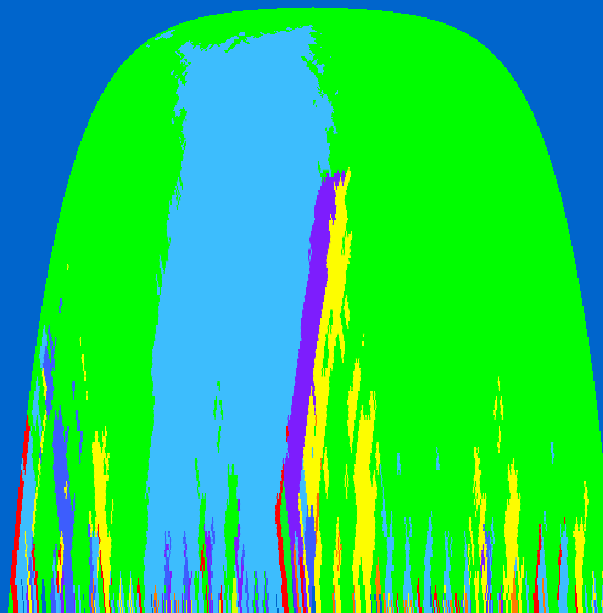




# Atonal Music

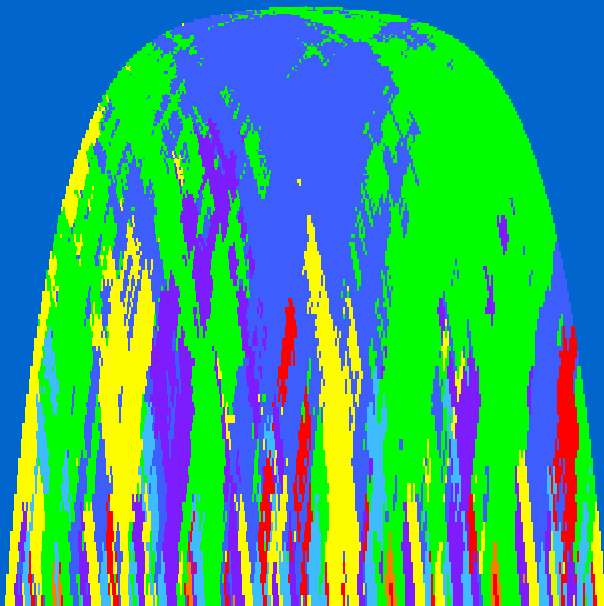


Webern Op 27, Mvmt. 1

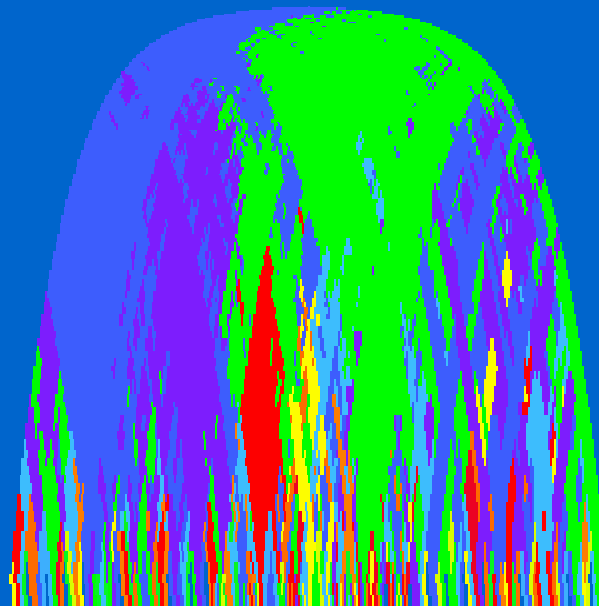


Mozart Sonatina in C, Mvmt. 1

# Pre-Tonal Music



Petrus de Cruce  
Motet  
(13th century)

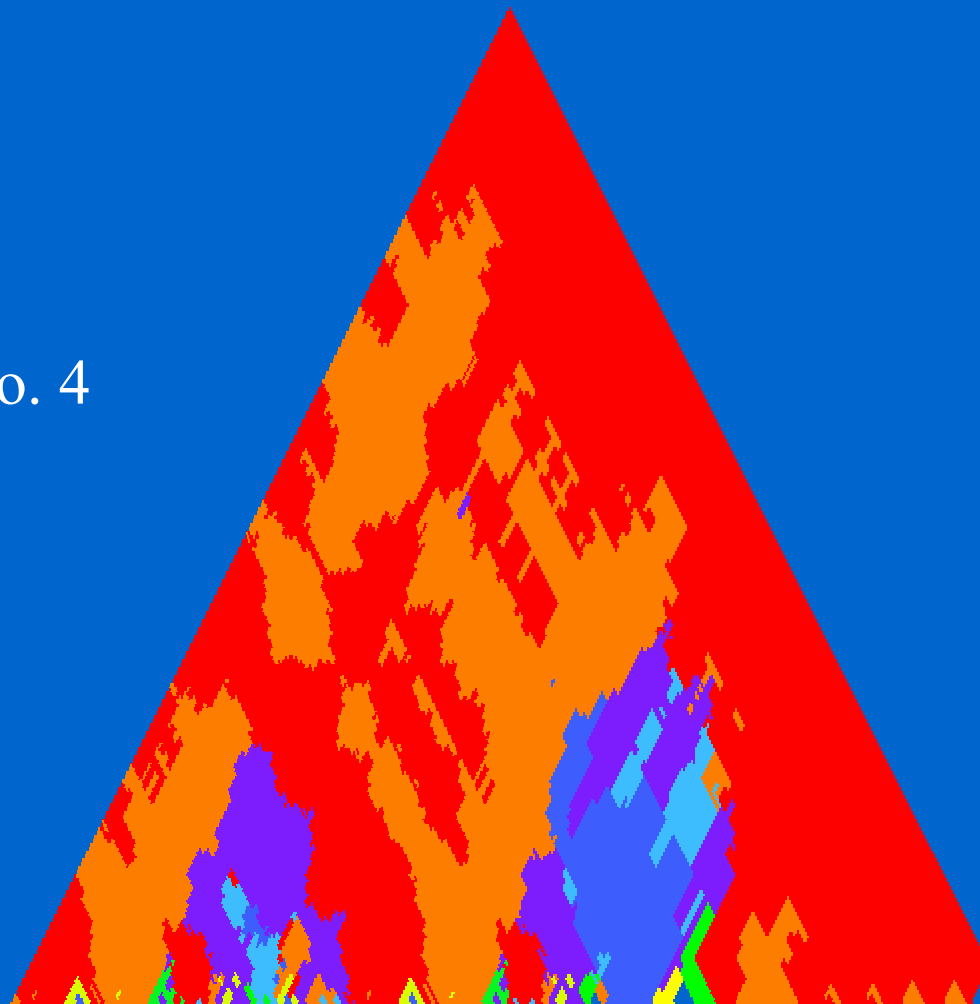


Webern Op. 27  
(20th century)

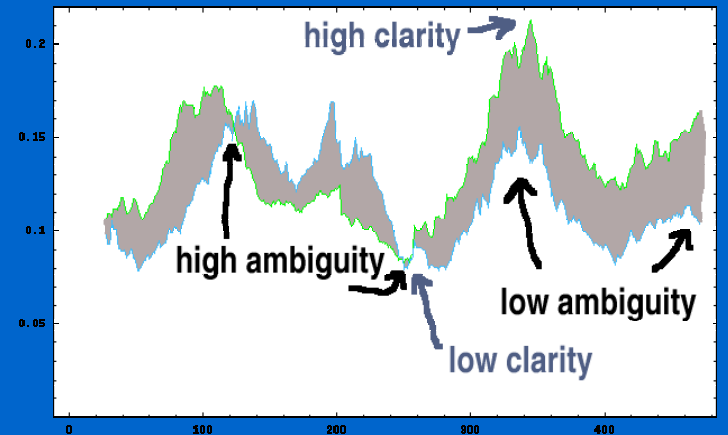
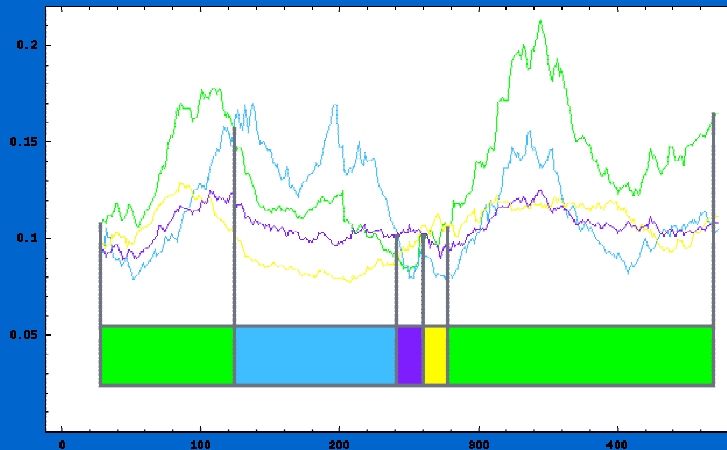
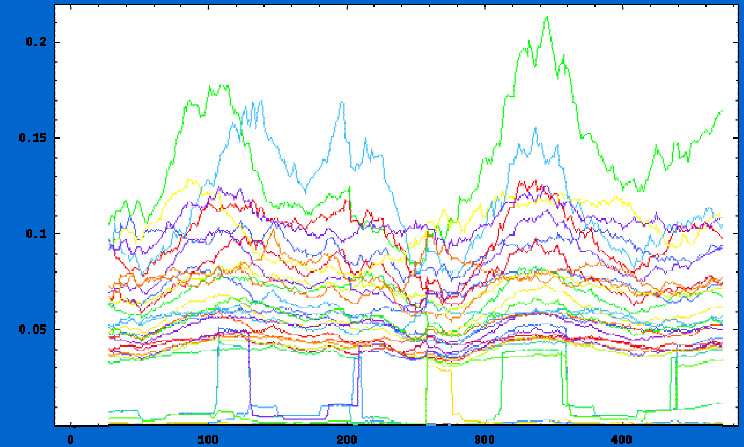
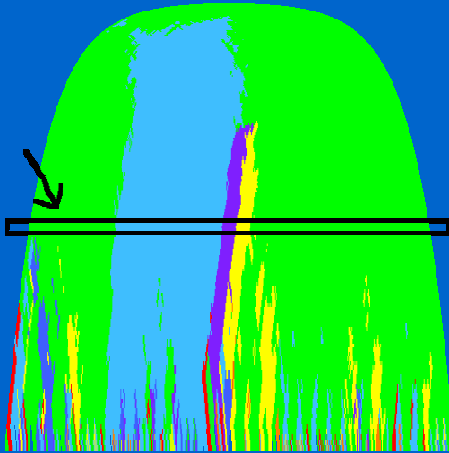
# Extended Tonality

Scriabin

Op. 11  
Prelude No. 4



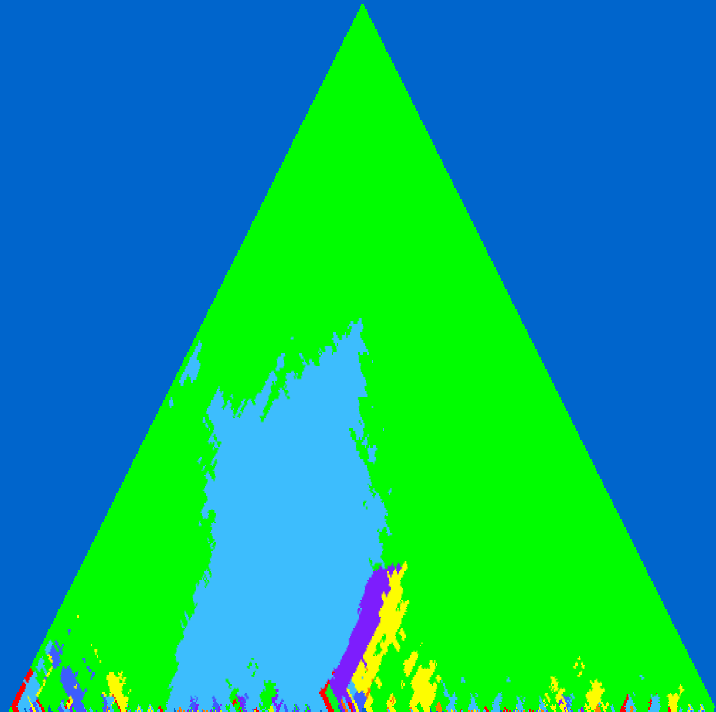
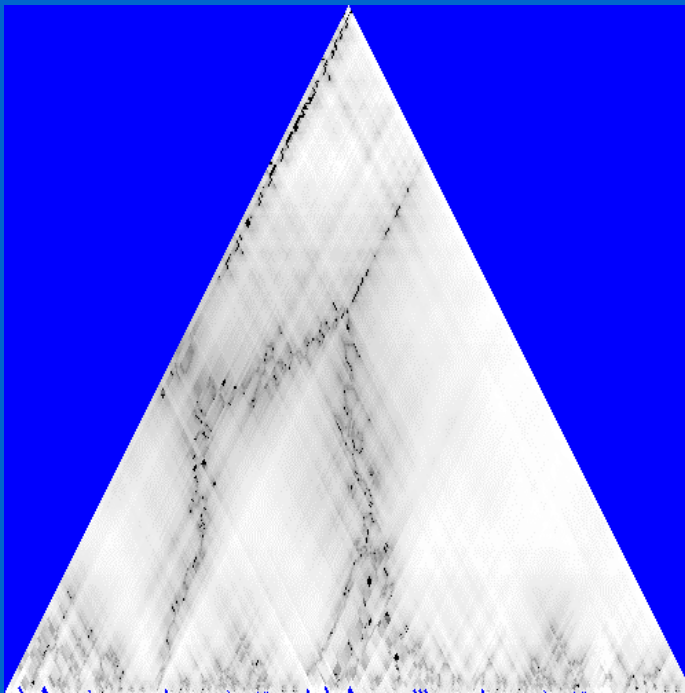
# Plot Variations



- 
- 
- 

# Plot Variations

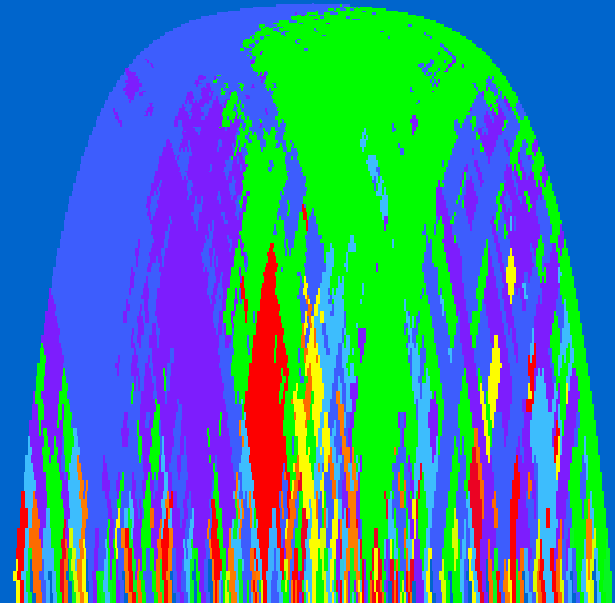
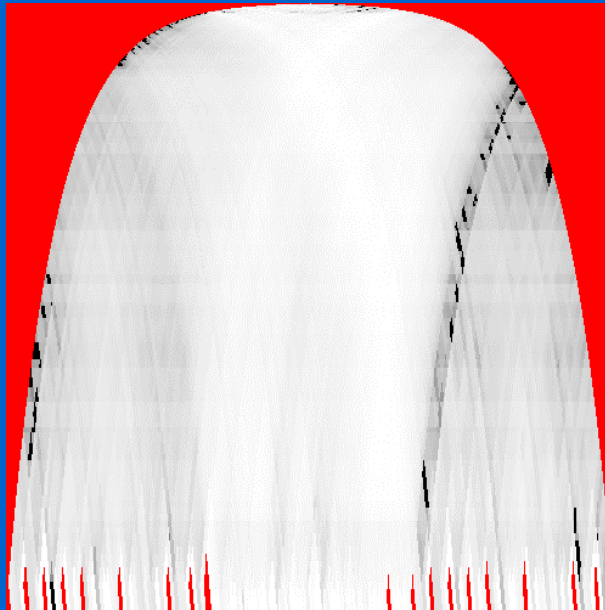
Ambiguity



- 
- 
- 

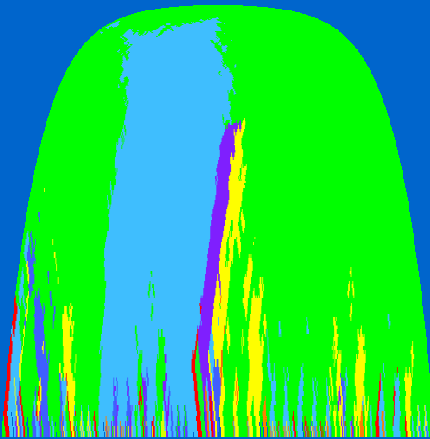
# Plot Variations

Clarity

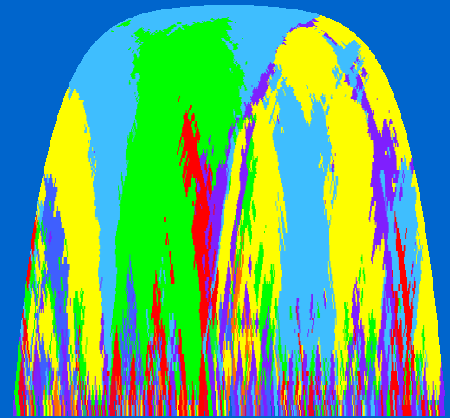
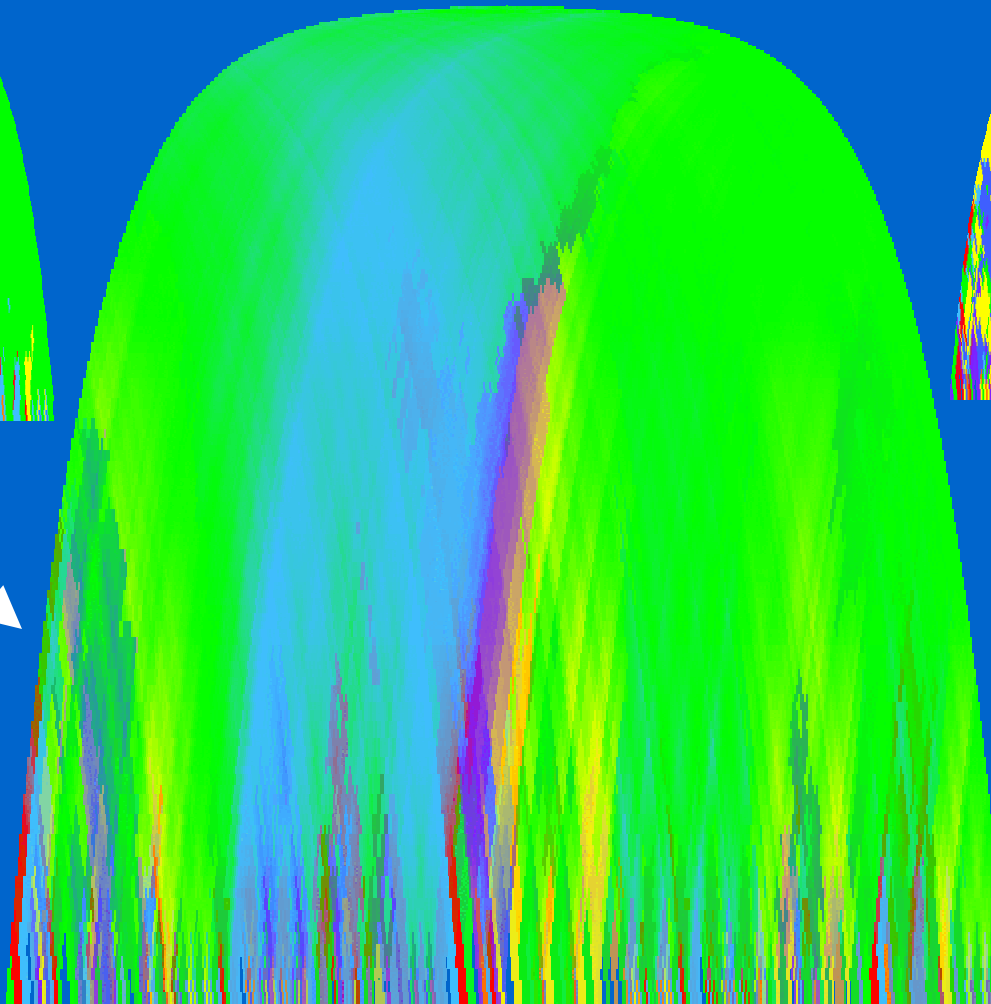


# Plot Variations

Interpolation



Best roots



Next-best  
roots

# Further Information

- Keyscape website:

<http://www-ccrma.stanford.edu/~craig/keyscape>

- Written description:

Presented at ICMC 2001, Havana, Cuba

<http://www-ccrma.stanford.edu/~craig/papers/01>